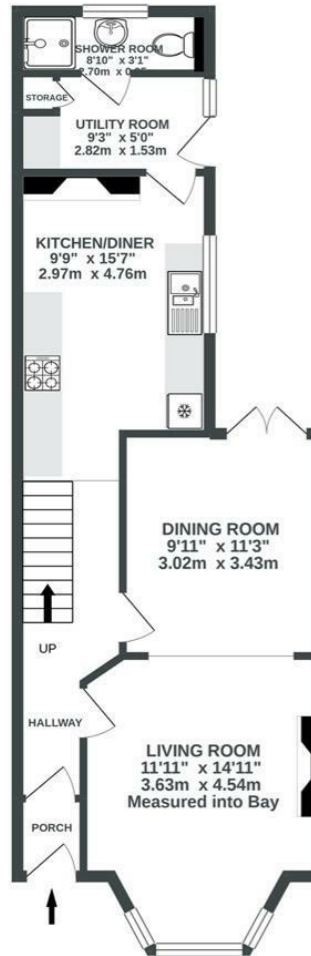


Boardwalk

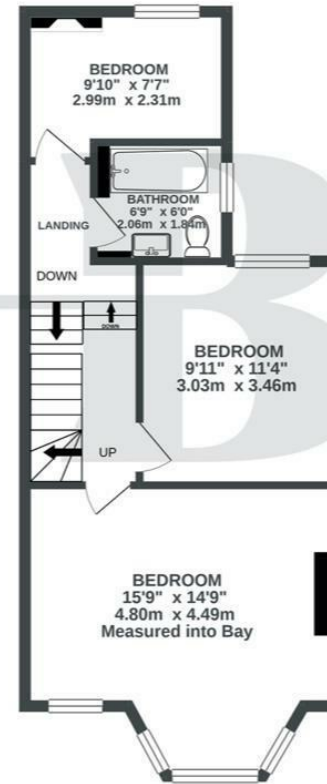
Harrowdene , BRISTOL



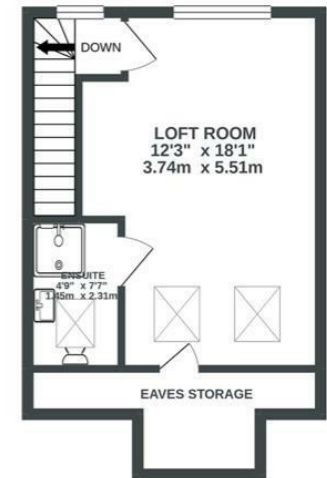
GROUND FLOOR
563 sq.ft. (52.3 sq.m.) approx.



1ST FLOOR
501 sq.ft. (46.5 sq.m.) approx.



2ND FLOOR
223 sq.ft. (20.7 sq.m.) approx.



TOTAL FLOOR AREA : 1287 sq.ft. (119.5 sq.m.) approx.

Whilst every attempt has been made to ensure the accuracy of the floorplan contained here, measurements of doors, windows, rooms and any other items are approximate and no responsibility is taken for any error, omission or mis-statement. This plan is for illustrative purposes only and should be used as such by any prospective purchaser. The services, systems and appliances shown have not been tested and no guarantee as to their operability or efficiency can be given.
Made with Metropix ©2021



~~Boardwalk~~

Harrowdene

, BRISTOL



£535,000



4 Bedrooms



Bristol, BS4

2 ID



3 Bathrooms

"We have spent the last 10 years lovingly updating our beautiful family home. We fell in love with this house due to its large rooms, amazing original features and great location. Being able to add the en-suite loft room was just the icing on the cake! The secluded garden is an absolute sun trap and provides a great space for playing with the family and entertaining friends. We could not be prouder of the home we have created.

We love this area and have amazing neighbours who will always stop and have a chat. There is a great community spirit within Knowle which is evident from many community events and thriving local businesses. It is not a Friday night without a pizza from A capella or Farrows Fish & Chips. Temple Meads and the city is only 15 minutes away in one direction yet drive 10 minutes in the opposite direction and you are in open countryside.

